



Photon Systems Instruments

Professional Instruments
for Plant Science, Biotechnology
and Agriculture

Plant Growth Chambers & Cultivation Rooms

Walk-In FytoScope

Walk-In FytoScope Provides

- Unique system of temperature control
- Prevention of water condensation
- High homogeneity of set parameters
- Specially assembled LED light technology
- Custom-made system
- Remote control

High-End Technology Allows

- Temperature extremes -5°C / $+45^{\circ}\text{C}$
with ensured full light exposure!
- Light intensity up to $3,000 \mu\text{mol}\cdot\text{m}^{-2}\cdot\text{s}^{-1}$
- Humidity in range **35–90 % (guaranteed from $+5^{\circ}\text{C}$)**



Wide Range of Applications

Let your plants grow
in highly-controlled
conditions

- Large scale experiments
- In vitro/soil cultivation

Specific solutions:

- High humidity cultivation
(*Oryza*)
- Vernalization
(*Brassica*, *Hordeum*)
- Homogeneity of growth
(phenotypical analysis)





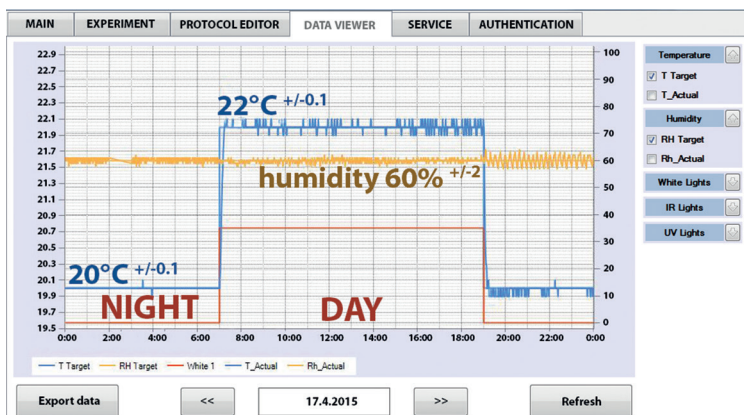
Unique System

PSI innovative solution – temperature exchanger enables:

- High-end technology of temperature control
- Precise temperature regulation not affected by light cycle regulation
- Maximal homogeneity of temperature and humidity
- Prevention of water condensation

Touch Screen

- 10.5" LCD color touch screen
- Remote monitoring, SMS alarms
- Web interface
- Graphical/table data view
- USB port
- User friendly programming
- Up to 100 user defined protocols
- Ramping/cloudy sky modes



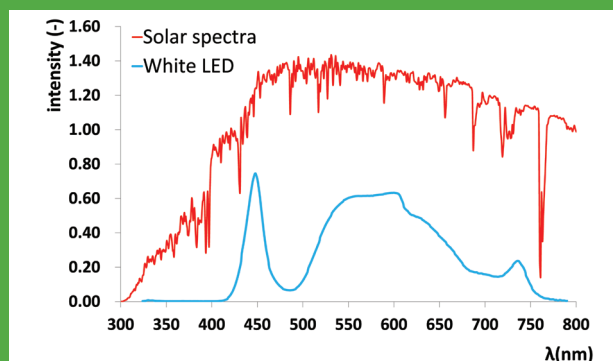
LED Light Source

Cost and energy efficient

- Added far-red LEDs for optimized plant growth
- Highly homogenous illumination
- 0–100% ramping available

Customize Your Growth

- Chamber size according your needs
- Multiple shelves to meet your application
- Shelving may be fixed or motorized
- Various light sources available (LEDs with different wavelengths/UV/fluorescent tubes)



**Photon
Systems
Instruments**

PSI (Photon Systems Instruments), spol. s r. o.
Drasov 470 | 664 24 Drasov | Czech Republic
info@psi.cz | www.psi.cz



www.psi.cz